



INTENSE VOLUME
& LENGTHENING



MAKE-UP RESULT

LASH QUEEN
M A S C A R A
FELINE BLACKS
LASH QUEEN
M A S C A R A

LASH QUEEN
M A S C A R A
FELINE BLACKS
LASH QUEEN
M A S C A R A

INTENSE
LENGTHENING,
VOLUME &
SEPARATION:

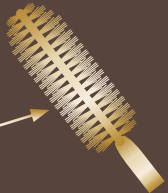
- LUSTROUS LIKE
THE FINEST FURS
- FELINE LOOK
INTENSITY



• Protection

• Even spread of formula

• Easy multi-layer



• Detangling notches

BRUSH

A UNIQUE
BRUSH/FORMULA DUO

BRUSH

- Detangling notches = Coat & lengthen each lash

FUR-COATING COMPLEX FORMULA

- “Smooth feeling” waxes = Easy multi-layer
- Surface-active agent = Even spread of formula
- Palm jojoba & cottonseed oil = Protection
- Easy multi-layer
- Even spread of formula
- Protection

For Lash Queen Feline
Blacks ONLY:
deeper black result



- 2 Lengthen the outer corner



- 1 Deposit charge all over the fringe

APPLICATION

APPLICATION

Apply LASH QUEEN
FELINE BLACKS from
the roots to the tips

- 1 Use the longer part to deposit charge, all over the fringe

- 2 With the brush end, lengthen the short lashes to create a feline look



UNPRECEDENTED JEWEL-DESIGN



For Lash Queen
Feline Blacks
A unique and bold
panther design

For Lash Queen
Mascara

Champagne-coloured
brushed metal tube

LASH QUEEN
FELINE BLACKS
M A S C A R A

LASH QUEEN
M A S C A R A

MAKE-UP RESULT

- Intense volume & lengthening
- Feline look

TECHNOLOGY

(A brush/formula duo)

- Brush
= Detangling notches
to coat
- Fur-coating
complex formula
= Intense volume
Easy multi layer
Protection

ONLY FOR LQ FELINE
BLACKS

Ultra-black pigments

JEWEL DESIGN

- Unprecedented
panther design